



X40T

WW / CW

X40T is an upgraded version of S20T, with brightness increased. Die-casting housing, fan-free design. With 19°, 26°, 36°, 50° lens optional, track mount version selectable. It's an idea product for art gallery, museum, shopping mall.

40W tunable LED profile spot

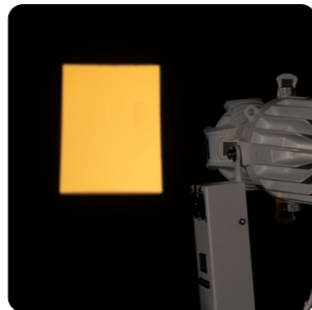
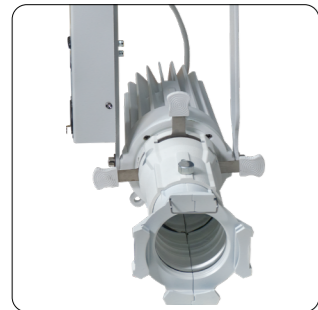
Key features:

- 40W WW+40W CW constant output LED
- 2700K - 6000K adjustable
- High CRI of 92
- Die-casting aluminum housing, fan-free
- 19°, 26°, 36°, 50° lens selectable
- Smooth dimming, flicker free
- Compact body, easy to set up
- DMX control of dimmer
- RDM function available

Application:

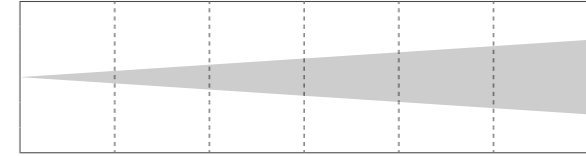
- Museum
- Theatre, church
- Shopping mall
- Art gallery
- Restaurant

Accessories:



Photometric

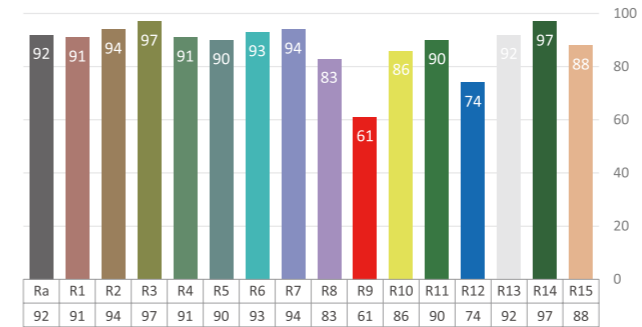
WW (lx)	3380	1010	477	283	190
CW (lx)	4560	1340	621	374	241
Full on (lx)	3980	1170	540	326	219



Distance(m)	1	2	3	4	5
Spot Diam(m)	0.33	0.7	1.06	1.41	1.76

Min. Spot - 19°

Color Rendition



Technical Data

Power supply:	AC100 - 240V, 50/60Hz
Light source:	40W WW + 40W CW
Color temperature:	2700K - 6000K adjustable
Fixed lens:	19°, 26°, 36°, 50° optional
Color Rendition:	CRI 92
Power connection:	Dedicated power in
Signal connection:	3-pin XLR in & out
Control channels	1/2/3/5
Control mode:	DMX, track mount version optional
Housing:	Color black or white, die-casting aluminum
Size:	275 x 135 x 110mm
N.W.:	1.5 kg
Accessories(incl.):	Power cable, gel frame
Accessories(opt.):	Gobo holder E sized, Clamp, Safety rope
Environment:	IP20