



3200K/5600K



COB
40W LED



Flicker Free



92
CRI

X40

WW / CW

40W LED profile single white

X40 is an upgraded version of mini profile 20, brightness increased by 50%. Die-casting housing, fan-free design. With 19°, 26°, 36°, 50° lens optional, track mount version selectable. It's an idea product for art gallery, museum, shopping mall.

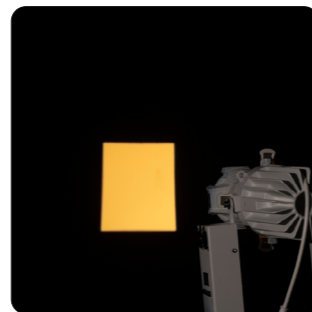
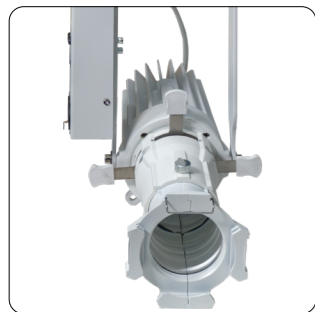
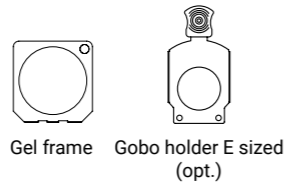
Key features:

- 40W COB LED, high lumen
- 3200K or 5600K color temperature
- 50% brighter than Mini Profile 20
- High CRI of 92
- Die-casting aluminum housing, fan-free
- 19°, 26°, 36°, 50° lens selectable
- Smooth dimming, flicker free
- Compact body, easy to set up
- Track mount version selectable

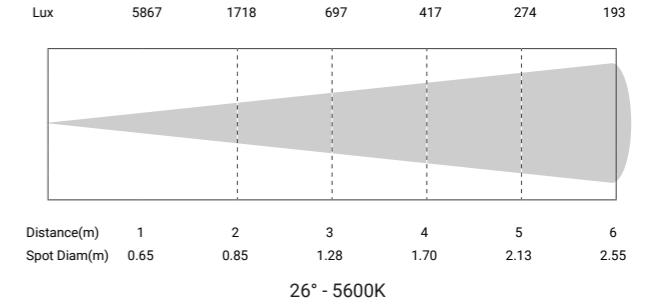
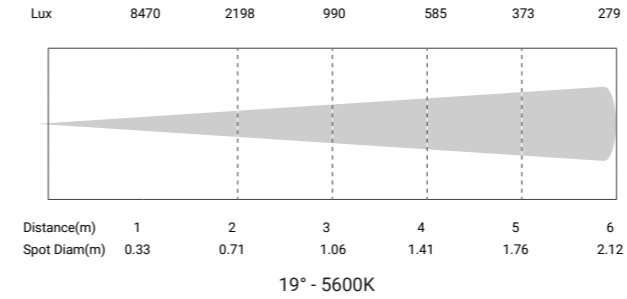
Application:

- Museum
- Theatre, church
- Shopping mall
- Art gallery
- Restaurant

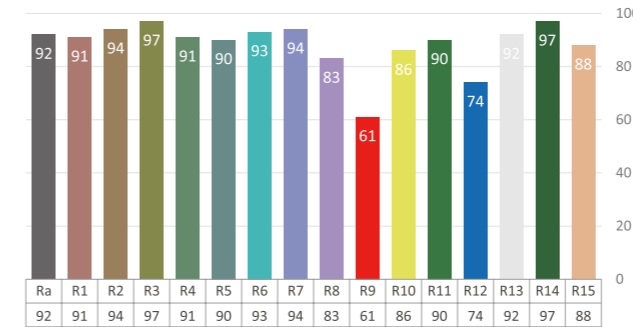
Accessories:



Photometric



Color Rendition



Technical Data

Power supply:	AC100 - 240V, 50/60Hz
Light source:	40W COB LED
Color temperature:	3200K or 5600K
Fixed lens:	19°, 26°, 36°, 50° optional
Color Rendition:	CRI 92
Power connection:	Dedicated power in
Signal connection:	3-pin XLR in & out
Control channels	1/3

Control mode:	DMX, track mount version optional
Housing:	Color black or white, die-casting aluminum
Size:	275 x 135 x 110mm
N.W.:	1.5 kg
Accessories(incl.):	Power cable, gel frame
Accessories(opt.):	Gobo holder E sized, Clamp, Safety rope
Environment:	IP20